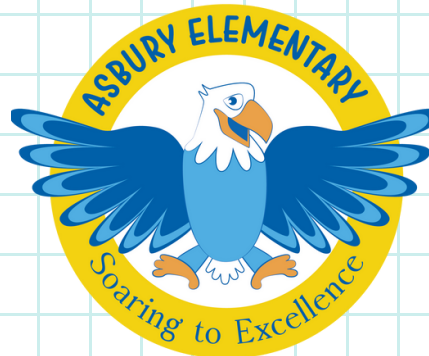
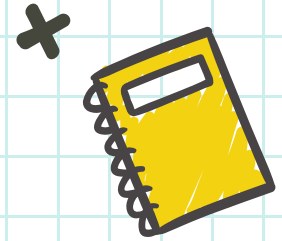
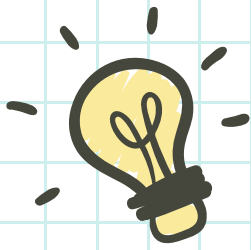


ASBURY ELEMENTARY



1320 E. ASBURY AVE.
(720)424-9750 | ASBURY.DPSK12.ORG



Welcome To Asbury!

Nestled in the University of Denver neighborhood, Asbury is a diverse elementary school housing over 330 students from kindergarten through 5th grade. Since 1925, the Asbury community has worked to build strong relationships between families, staff, students and extended community. We value inclusion and diversity, ensuring that every student becomes an integral part of the Asbury family. We thrive on innovation, collaboration, creativity, academic excellence and empowering life-long learners.

OUR VALUES

WE ENCOURAGE CHILDREN TO EXCEL
IN ALL THEY DO BY EXEMPLIFYING
OUR BEST CHARACTER TRAITS:

BE KIND AND CARING
EXCEL IN LEARNING
SHOW RESPECT
TAKE RESPONSIBILITY

OUR VISION

WE ARE A DIVERSE, VIBRANT
COMMUNITY OF INQUISITIVE AND
ENGAGED LEARNERS. WE ARE
COMMITTED TO EXCELLENCE AND
EQUITY TO FOSTER SELF-DIRECTED,
RESPECTFUL AND EMPOWERED
LIFELONG LEARNERS.



"I like my teachers because we learn, but we do it in a fun way. They can be serious at times, and we get our work done, but then we also have fun! They also keep us safe."

-Asbury student

About Asbury

- Serving our Asbury community since 1925
- 315 students in kindergarten to fifth grade
- Rated GREEN on the School Performance
- Framework, meeting district expectations for success
- Emphasis on personalized and project-based learning
- One-on-one technology school
- Before and after school programming through Discovery Link
- Multi-intensive center-based program for primary and intermediate grades
- Full-day kindergarten

ASBURY FUN FACTS

THE ASH TREE ON
OUR FIELD IS ONE OF
THE OLDEST TREES
IN DENVER. IT IS
NAMED
BOB!

THERE IS A
CHINA SET IN
THE PRINCIPALS
OFFICE THAT
HAS BEEN HERE
SINCE 1930.

THERE ARE
STILL DOORS IN
THE BUILDING
THAT USE
SKELETON KEYS.

Opportunities for Enrichment

Specials

Each child engages in Art, Music, PE and Technology in order to foster creativity, athletic activity and hands on learning.

Enrichments

At Asbury, we have a variety of before and after school opportunities and extracurriculars that allow students to explore a wide range of activities outside of the classroom. Some enrichments available at Asbury include:

- Garden Club
- Chess Wizards Chess Club
- Play-Well Lego Club
- Running Eagles Running Club
- KidStage Drama Club
- SkateStart Skateboarding Club
- Club Amigos Spanish Club
- Coding
- Yoga

Depending on availability

Whole Child Support

A primary focus of the Asbury experience is a strong social-emotional curriculum.

Students work alongside their peers and teachers to develop an understanding of their emotions, self-awareness and problem-solving skills. Our goal is to enrich student strength, enabling them to grow into caring and responsible citizens.

“There are opportunities that I haven’t seen at other schools that focus on health and fitness and sustainability. They have gardening, dance, yoga, recycling and composting...there is a wide variety of extracurricular activities and opportunities!”
-Asbury Parent



Where Students Learn to Soar

Asbury is more than your traditional neighborhood school. We have several new and exciting program offerings, such as project-based learning, and personalized learning catered to each student's needs. We also integrated technology into the classroom on a daily basis.

"MOTIVATION IS WHAT POWERS YOU TO DO WELL!"
-ASBURY STUDENT

Project-Based Learning

Project-based learning is a teaching method in which students investigate and respond to an authentic, engaging and complex question, problem or challenge. Through project-based learning, Asbury students take ownership of their learning and are able to apply their learning to real-world situations using standards-based instruction. A project can take place in any content area, and projects build skills such as critical thinking, collaboration and self-regulation.

Personalized Learning

At Asbury, our teachers guide students to master their goals through a personalized learning pathway. We know that all students are different and may learn differently, thus our school provides individualized instruction tailored to meet the needs of each student.

One-to-One Technology

Through one-to-one technology, each student gains 21st-century skills to prepare students for their future. Students each have their own Chromebook, and classrooms are equipped with Promethean boards.

Connecting With Our Community

Committed Teachers

Asbury has a staff of committed and caring educators who have high expectations for all students. It is our goal and commitment to provide the very best learning opportunities for all students, across the curriculum.

"I LIKE MY TEACHERS BECAUSE WE LEARN, BUT WE DO IT IN A FUN WAY. THEY CAN BE SERIOUS AT TIMES, AND WE GET OUR WORK DONE, BUT THEN WE ALSO HAVE FUN! THEY ALSO KEEP US SAFE."
-ASBURY STUDENT

Parent-Teacher-Student Organization (PTSO)

We offer a broad range of volunteer opportunities for parents and welcome their participation. PTSO members also support the Asbury community with fundraising for extra support in the classroom, food donations, school-community events, and school communications. Contact us to learn more about how to join the PTSO.

Neighborhood Partnerships

Our community partners include relationships with surrounding businesses and schools, including the University of Denver. These surrounding supports offer our students exposure and experience in the real world in which they can apply the skills acquired through Project Based Learning and our curriculum.